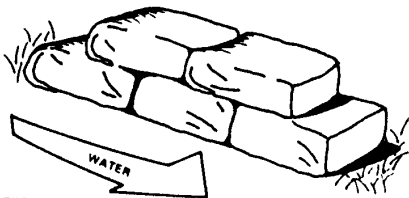
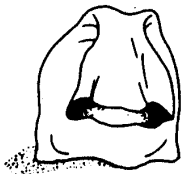


PREVENT FLOODING

Sandbags

Sandbags, when properly filled and placed will redirect storm and debris flows away from property and improvements.

1. Fill sandbags one-half full. Sand is suggested if readily available; however, sand is not mandatory, and any local soil may be used.
2. Fold top of sandbag down and rest bag on its folded top (See Fig. 1 below).



PLACING

Fig.1 SANDBAG FILLING AND PLACEMENT

Care should be taken to stack sandbags in accordance with the illustrations. Place each sandbag as shown, completing each layer prior to starting the next layer. Limit placement to two layers unless a building is used as a backing.

It is important to place the bags with the folded top of the bag in the upstream or uphill direction to prevent the bags from opening when water runs by them.

LIMITATIONS

1. Sandbags will not seal out water.
2. Sandbags deteriorate when exposed for several months to continued wetting and drying. If bags are placed too early, they may not be effective when needed. If it is necessary that bags remain durable for a longer time, the addition of cement can increase effective life.
3. Sandbags are basically for low-flow protection (up to two feet). Protection from high flow requires a more permanent type of structure.

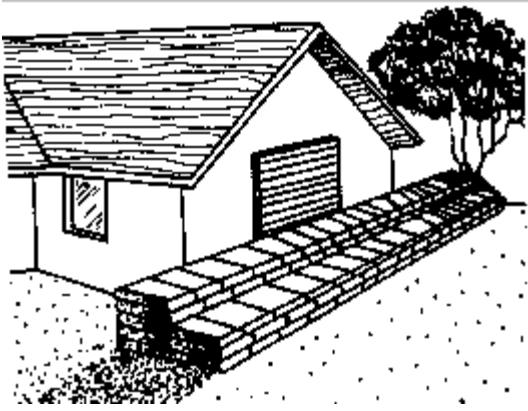


Fig. 2 SANDBAG STACKING

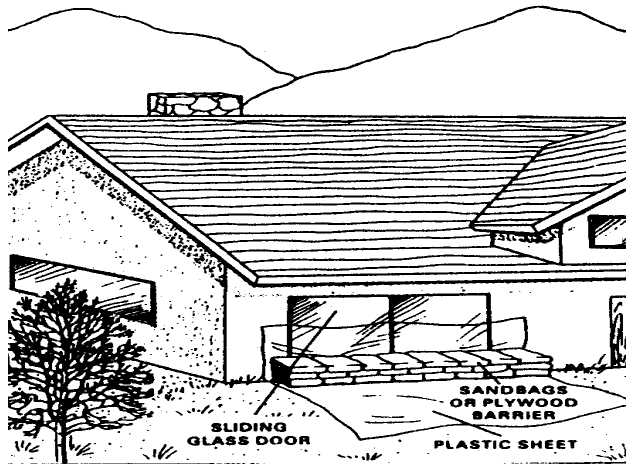


Fig.4 SLIDING GLASS DOOR SEALING

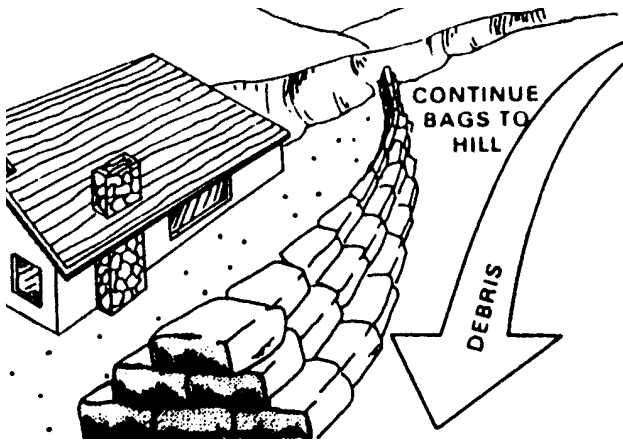


Fig. 3 DIRECTING DEBRIS AWAY FROM BUILDINGS

After the Rainy Season is Over!

What do I do with the sandbags after use? Emptying the sand from the bags and placing it in your garden or flower beds will enhance the soil when tilled in the spring. The empty bag can be utilized for gardening practices or simply let air dry and save until next year. If you do not want to utilize these practices, please empty the sand from the bags and return the bags to the Corporation Yard or discard in your refuse container (our preference would be to recycle the bags). Please do not place full sandbags in your refuse container as this greatly diminishes our recycling activities.

The Corporation Yard has a limited supply of sandbags. For further information call 665-8615
The Corporate Yard is located at 360 N. First Street in Chowchilla

IF YOU NEED ASSISTANCE DURING THE STORM AND IT IS NOT LIFE THREATENING

DO NOT CALL 911

**INSTEAD CALL 665-8615 or 665-8600
AND OUR CREWS WILL ATTEMPT TO PROMPTLY ASSIST YOU**